

1. BEFORE YOU START

This Quick Start Guide will guide you through the process of updating the firmware on your Kanguru QSX.

What you will need:

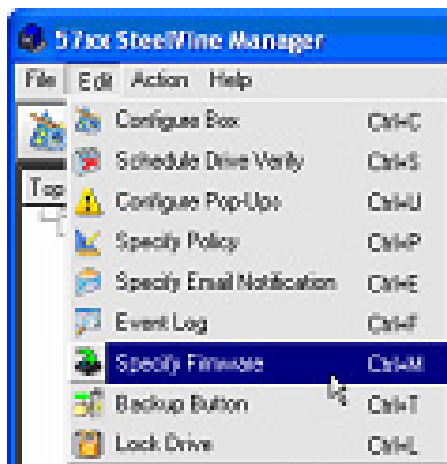
- Kanguru QSX
- A computer running Windows XP or Mac 10.3 or later

2. UPDATING THE FIRMWARE VERSION

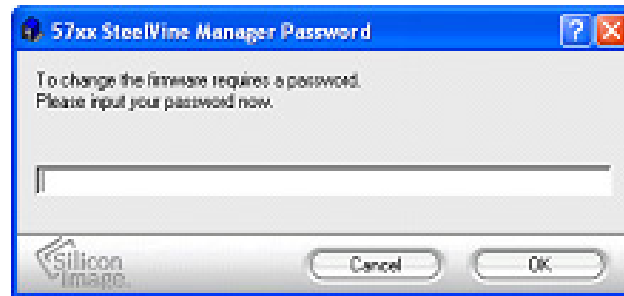
You should have downloaded a file from the Kanguru Support Site called 'QSX Firmware update.rar'. This file contains the SteelVine Manager application and the 'Sil57x4_11589.bin' firmware file. Extract the files to a folder on your computer.

To update your QSX firmware:

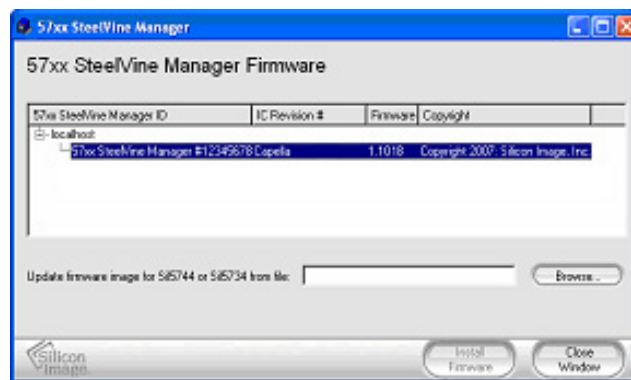
1. Connect your QSX to your computer via USB and power it on.
2. Install the Steelvine software on your operating system. Once installation is complete, open the SteelVine Manager application.
3. Select Specify Firmware from the 'Edit' menu, or click on the **Specify Firmware** toolbar button.



4. You will need to enter an administrator password in order to perform the firmware update. Enter the administrator password (the default password is **admin**) and then click on the **OK** button



5. The Firmware Selection window appears, displaying the QSX processor and its current firmware version.



6. Highlight the QSX processor and then click on the Browse button. Direct the SteelVine Manager to the 'SiL57x4_11589.bin' firmware file that you downloaded from Kanguru's website.
7. Click on the **Install Firmware** button to begin the update process. A progress bar will appear along the bottom of the window to show you the upgrade process.

CAUTION: Do not power off the QSX while the firmware is being updated. The firmware installation process takes less than two minutes to complete for a standalone system.

8. Once the firmware upgrade process has completed, a confirmation window appears requesting that you restart your system. Restart your system and power cycle your QSX to complete the firmware update.

Your QSX has now been updated with the latest firmware version, which will allow you to expand a single volume past 2TB.

If you have any problems updating your firmware, please contact Kanguru Technical Support at 508-376-4245